

TeSys N Self-Protected Combination Motor Controller

Space-saving design features easy installation and maintenance

Introducing the smaller, next-generation, Square D™ TeSys N NEMA® combination motor starter from Schneider Electric. This update to the TeSys family is refining the industry standard for an efficient, robust, and reliable combination starter.



NEMA Size 1



Starter in "Installation" position for easy access

These next-generation combination starters are simple to choose, install, and use. Competitively priced, they offer options to match your exact needs, and fast, five-day delivery of popular TeSys™ combination starter options. Others can be shipped within ten days.

The TeSys N Self-Protected Combination Starter offers:

- > Durable NEMA Sizes 00, 0, and 1 motor controllers.
- > Space-saving design featuring the smallest footprints on the market.
- > Long-lasting NEMA Type 1, 12/3R painted steel, and 4/4X stainless steel enclosures.
- > Connects to a variety of communication networks with optional starter modules.
- > Fast availability for hundreds of versions and options for control transformers, pilot lights, and auxiliary devices.
- > Short circuit current rating is 65 kA at 480 V Wye according to UL® 508 Type E, with an option of 130 kA at 480 V Delta.

Easy to choose, install, and use

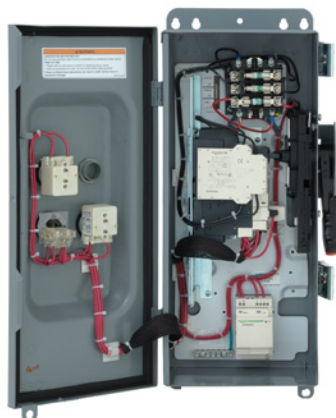
- > Complies with common specifications and standards: NEMA, UL, and CSA®.
- > Starter is mounted on a patent-pending Hinge Assembly that swings out closer to the electrician for superior accessibility for installation, wiring, and maintenance. Starter neatly swings back into position for operation.
- > Enclosures feature quick-release cover latches for efficient installation.
- > Last minute changes to match motor full load currents are as easy as setting the dial.
- > Changing overload modules does not require tools.



by Schneider Electric



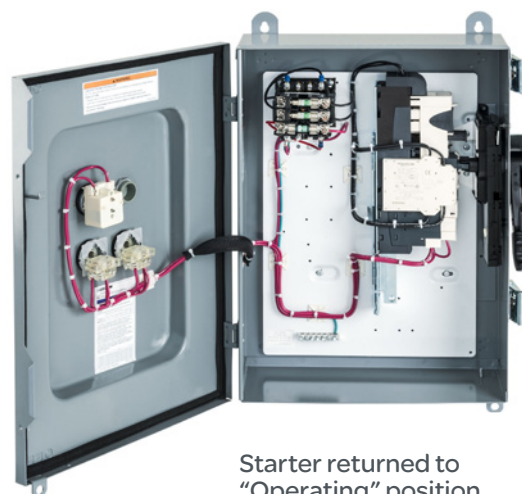
Standard enclosure



Patent-pending hinge assembly in "Operating" position



Oversized enclosure



Starter returned to "Operating" position

Space-saving design for greater efficiency

- > NEMA Size 1 combination starter unit is the world's smallest.
- > Mounting footprints are minimized using compact NEMA Type 1, 12/3R painted steel, and 4/4X stainless steel enclosures.
- > The patented modular design simplifies selection and inventory.

Superior performance and safety you can trust

- > Side-mounted, safety switch style disconnect mechanism for manual switching and resetting of the controller.
- > The UL self-protected designation means outstanding performance under short-circuit conditions.
- > The motor starter is ready to restart the system immediately after fault is cleared.
- > **Starter is five times** more energy efficient than legacy starters.



For more information on the TeSys N Self-Protected Combination Motor Controller, ask your authorized Schneider Electric distributor, visit www.schneider-electric.com/us or call **888-SQUARED**.



Explore the TeSys N Self-Protected Combination Motor Controller 3D Interactive Model! Scan this QR code with your smartphone to download the **iTunes® 3D Interactive Model app**.

Schneider Electric USA

1415 S. Roselle Road
Palatine, IL 60067
Tel: 847-397-2600
Fax: 847-925-7500
www.schneider-electric.com/us